

ROCKINGER



ROCKINGER Hitches

Price List July 2022 v2.1.1

01/07/2022

Alo UK Ltd

Unit 1 Ryelands Business Centre,
Ryelands Lane,

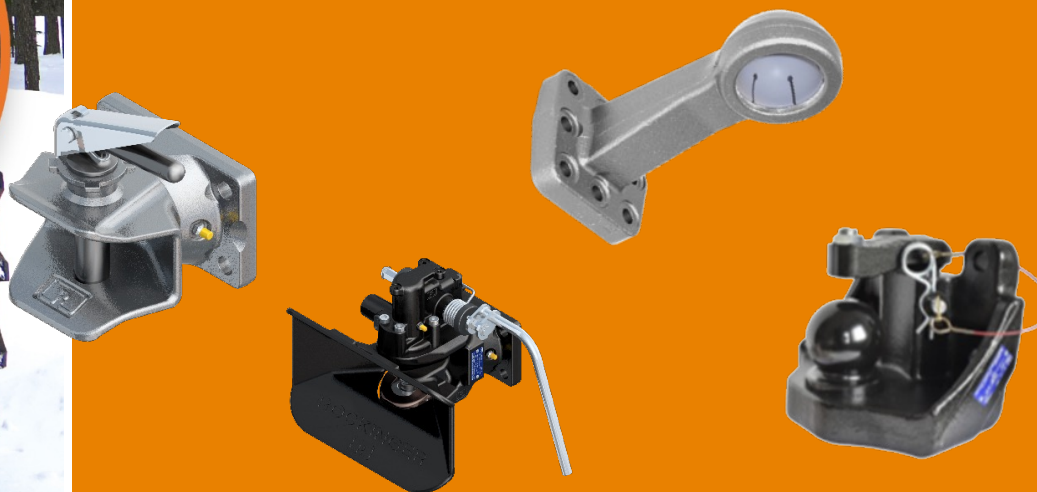
Elmley Lovett, Droitwich,
Worcestershire. WR9 0PT

01299 250922

www.quicke.uk.com

Member of JOST Agriculture

JULY 22



All prices stated are in Pounds Sterling (£) rrp



ROCKINGER – Home of hitches

EXPERTISE IN THE TOWING HITCH SECTOR

140 YEARS

EXTREMELY BROAD PRODUCT RANGE & HIGH

QUALITY

NEW PLANT SINCE 2013 WITH

> 5,000 m²



ROCKINGER and Quicke: BETTER ALL-ROUND

ROCKINGER

Within the strong core brand **JOST Agriculture**, we offer our customers guaranteed quality and performance through our brands ROCKINGER and Quicke. Both long-established brands offer an extremely versatile, high-quality and reliable product range.

No wonder that ROCKINGER is regularly named the “best brand” by end customers. ROCKINGER and Quicke products are produced specifically for the respective markets on every continent. This guarantees close customer contact and a suitable range of products – and ensures that original spare parts can be supplied in next to no time, anywhere in the world.

SMARTER – SAFER – STRONGER. With **JOST Agriculture**.

Quicke



ROCKINGER

SHIPPING COSTS

Quicke

| Delivery/Carrier | | | Package |
|--|--|---|-----------------------|
| Towing Hitch | | | £45.00 |
| 80mm Ball Hitches | | Single delivery below £1500.00 | £45.00 |
| Calotte and towing eyes | | | £45.00 |
| Urgent Delivery | | Single delivery | £100.00 |
| Orders over £1500.00 | | Does not include "Urgent Delivery Items" Higher carriage charges will apply to heavy items | Free of Charge |
| Other types of distribution, deliveries per express possible | | | Price on request |

GENERAL INFORMATION (TERMS and CONDITIONS)

- PAYMENT CONDITIONS: 30 days net cash applies. All deliveries are made in accordance with our terms of sale and delivery.
- Prices apply in UK only and include carriage to UK mainland address unless shown as ex-works or for orders placed under £2,400 retail value (excluding V.A.T.)
- All prices are ex works in £ (Pounds Sterling) without VAT.
- The prices and technical details are non-binding and could therefore be subject to change at the company's discretion and without notice.
- The issue of this price list deems all previous pricelists null and void.
- All goods supplied remain the property of Alo UK until full payment is received. Any delivery dates quoted are approximate only and orders not executed prior to further price increase will be charged at prices applicable at the time of despatch.

A refurbishment charge of 20% will apply to products returned to Alo UK (Jost GB) which are not in a resalable condition including incorrectly ordered goods or goods no longer required. Parts missing from returned kits/loaders will also be charged.

Boxed goods will also incur this charge, but will not be accepted for return if in an unsaleable condition especially if stored outside. **BOXED GOODS MUST NOT BE STORED OUTSIDE.**

CLAIMS: No claim for damage or shortage will be paid unless the carrier and Alo UK Ltd are notified in writing within three days of delivery or in the case of non-delivery, within twenty eight days of date of despatch.

IT IS RECOMMENDED THAT ALL ROCKINGER PRODUCTS BE INSTALLED BY EXPERIENCED TECHNICIANS. FAILURE TO DO SO MAY INVALIDATE THE WARRANTY OF THE PRODUCT.

- Visit our homepage www.rockinger-agriculture.com where you will find more information

Management and Accounts:

MANAGEMENT GENERAL MANAGER

STEVEN HEWITT
Tel.: 01299 250922

ACCOUNTS

ALO AB ACCOUNTS - Sweden

Tel.: 01299 250922 Option 4
Direct: +4690170592

Aloaccountsreceivable-UK@alo.se

Order Management:

IN HOUSE SALES SUPPORT ORDER MANAGEMENT

TRUDIE GOLBY
Tel.: 01299 250922 Option 1
sales@alo.uk.com

SALES SUPPORT ORDER QUERIES and DELIVERY QUERIES

GENERAL
Tel.: 01299 250922 Option 1
customersupport@alo.uk.com

Parts:

SPARE PARTS SPARE PARTS SPECIALIST

GAVIN JONES
Tel.: 01299 250922 Option 2
parts@alo.uk.com

Technical Support:

SERVICE TECHNICAL SUPPORT & PRODUCT SPECIALIST

GRAHAM GOULD
Tel.: 01299 250922 Option 3
service@alo.uk.com

General:

ENQUIRIES

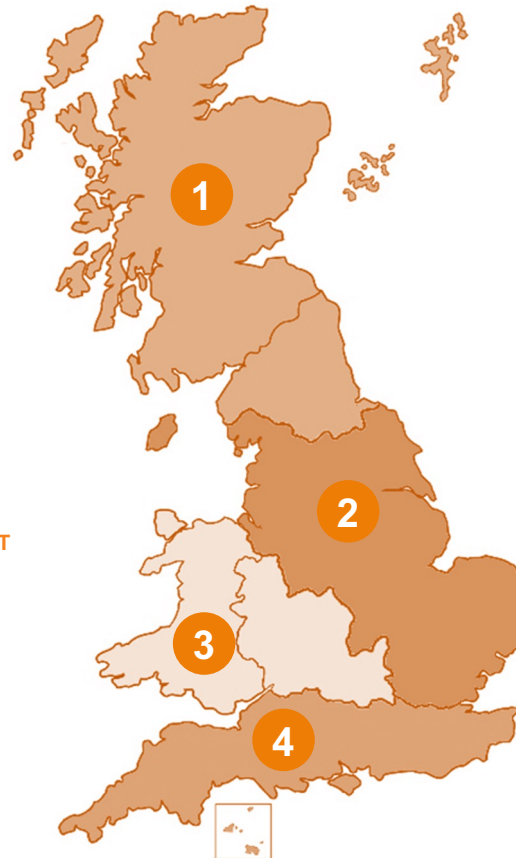
GENERAL CONTACT
Tel.: 01299 250922
enquires@alo.uk.com



Alo UK Ltd

Unit 1 Ryelands Business
Centre, Ryelands Lane,
Elmley Lovett, Droitwich,
Worcestershire WR9 0PT
Tel: 01299 250922
www.quicke.uk.com

SALES/FIELD TEAM



ACCOUNT MANAGER
SCOTLAND/NORTH of ENGLAND

MURRAY THOMSON
Mobile: 07713 787051
murray@alo.uk.com

ACCOUNT MANAGER
NORTH CENTRAL/EAST ANGLIA

PETER THOMPSON
Mobile: 07836 364233
peter@alo.uk.com

ACCOUNT MANAGER
WALES and the MIDLANDS

RHYS THOMAS
Mobile: 07713 787052
rhys@alo.uk.com

ACCOUNT MANAGER
SOUTH of ENGLAND

JAMES PICKERING
Mobile: 07964 005989
james@alo.uk.com

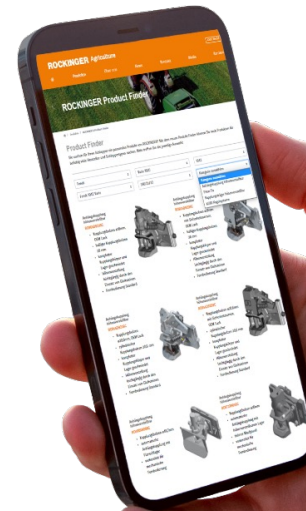
Product Finder by ROCKINGER Agriculture

ROCKINGER

Did you know that we have launched our new Online Product Finder?

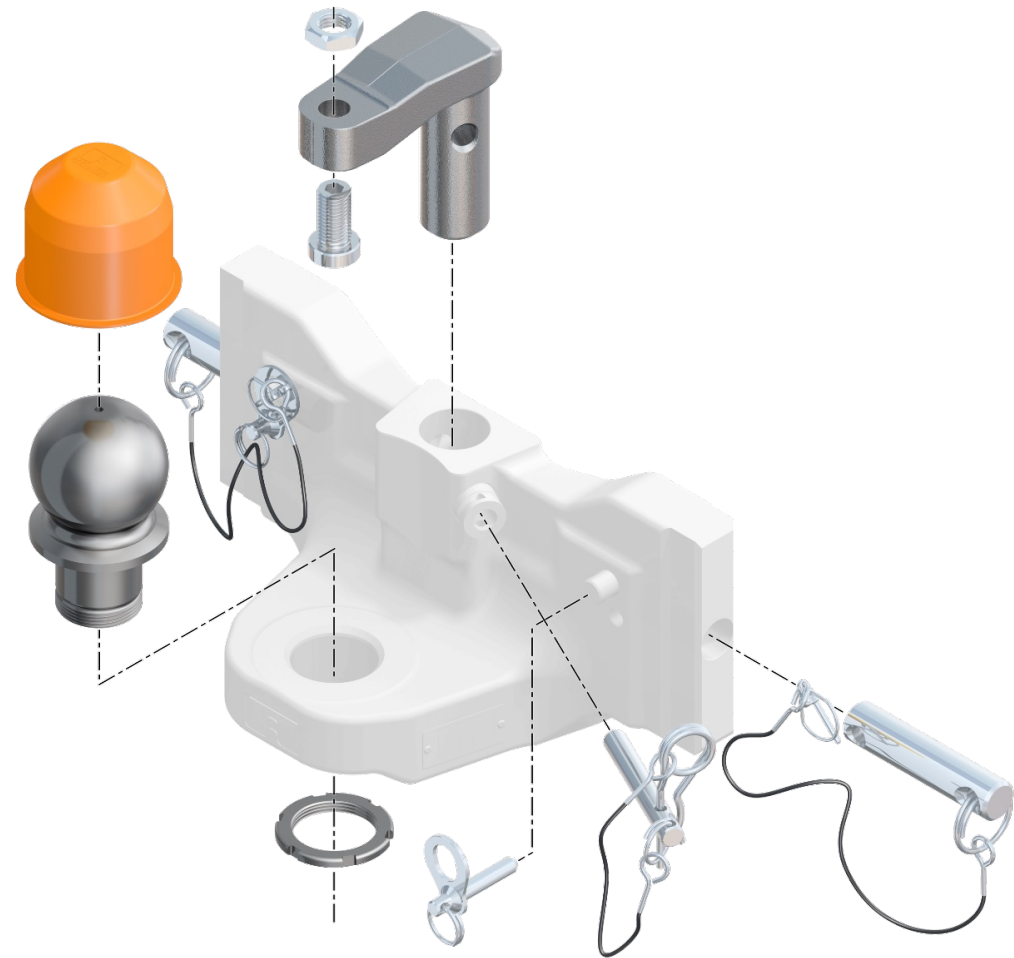
It enables you to find the products you really need even faster and more precisely. In comparison to the e-catalogue and print catalogue, the product finder search is filtered by tractor manufacturer, series, model and gauge.

www.rockinger-agriculture.com

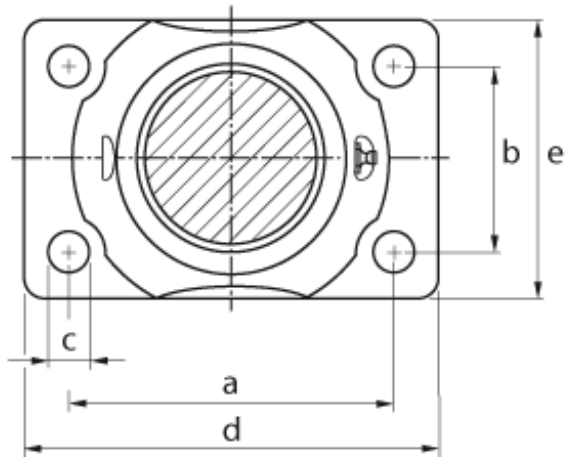


Products with a
large variety of
spare parts

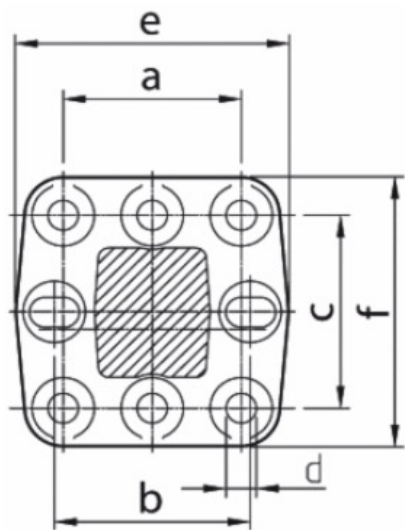
detailed list on
request



Towing Hitches



| a (mm) | b (mm) | c (mm) | d (mm) | e (mm) | f (mm) |
|--------|--------|--------|--------|--------|--------|
| 120 | 55 | 15 | 155 | 90 | 16 |
| 140 | 80 | 17 | 180 | 120 | 21 |
| 160 | 100 | 21 | 200 | 140 | 20 |



Calottes and Towing Eyes

| a (mm) | b (mm) | c (mm) | d (mm) | e (mm) | f (mm) | hole flange |
|--------|---------|--------|--------|--------|--------|-------------|
| 100 | 110 | 110 | 17 | 154 | 154 | 8-hole |
| 145 | 145/160 | 145 | 21 | 205 | 195 | 8-hole |

RO 865 B 4030 0

- RO = Rockinger
- 8 = Agriculture product
- 65 = body / hitch type 865 for 38mm pin
- B = Flange bearing
- 40 = Hole pattern 140 x 80mm
- 3 = prepared for remote control
- 0 = black e-coated
- 0 = technical status

Homologation

- ABG: german type approval
- EG: european type approval
- ECE: international type approval

Steel Quality – Calottes and Towing Eyes



High density **42CrMo4** material, that is quenched, tempered and hardened.
The benefit is a considerable decrease in wear comparing to standard S355/ST52 steel and 25CrMo4



Density of **25CrMo4** material, that is hardened and tempered and decrease the wear comparing to standard S355/ST52 steel

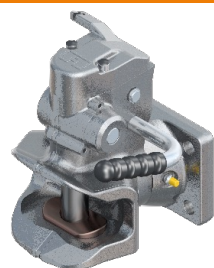
Towing hitch with pin

ROCKINGER

30.6mm pin



FLANGE TOWING HITCH 30.6mm AUTOMATIC



| RO Part number | Description | Hole pattern* (mm) | D-value (kN) | Vertical load (t) | Homologation | PRICE |
|----------------|---------------------------------------|--------------------|--------------|-------------------|--------------|-------|
| RO855B30300 | Towing hitch 855B30 handlever upwards | 120 x 55 | 50.0 | 1.5 | EG | £655 |
| RO855B40300 | Towing hitch 855B40 handlever upwards | 140 x 80 | 82.0 | 2.0 | EG | £655 |
| RO855B50300 | Towing hitch 855B50 handlever upwards | 160 x 100 | 98.1 | 2.5 | EG | £655 |

31.5mm pin



FLANGE TOWING HITCH 31.5mm MANUAL

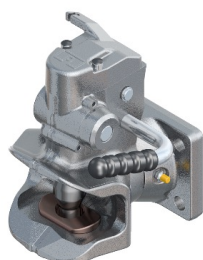


| RO Part number | Description | Hole pattern* (mm) | D-value (kN) | Vertical load (t) | Homologation | PRICE |
|----------------|------------------------------|--------------------|--------------|-------------------|--------------|-------|
| RO810B30506 | Towing hitch 810B30 with pin | 120 x 55 | 50.0 | 1.5 | EG | £270 |
| RO810B40505 | Towing hitch 810B40 with pin | 140 x 80 | 82.4 | 2.0 | EG | £270 |
| RO810B50505 | Towing hitch 810B50 with pin | 160 x 100 | 89.3 | 2.0 | EG | £270 |

38mm pin



FLANGE TOWING HITCH 38mm AUTOMATIC



| RO Part number | Description | Hole pattern* (mm) | D-value (kN) | Vertical load (t) | Homologation | PRICE |
|----------------|---------------------------------------|--------------------|--------------|-------------------|--------------|-------|
| RO865B30300 | Towing hitch 865B30 handlever upwards | 120 x 55 | 50.0 | 1.5 | ABG / EG | £655 |
| RO865B40300 | Towing hitch 865B40 handlever upwards | 140 x 80 | 82.0 | 2.0 | ABG / EG | £655 |
| RO865B50300 | Towing hitch 865B50 handlever upwards | 160 x 100 | 98.1 | 2.5 | ABG / EG | £655 |

All hitches are standard black e-coated
Available OEM colours: ■ John Deere green ■ AGCO grey ■ black

* Hole pattern and track width see page 8

Acceptable Wear



Big funnel automatic towing hitch

ROCKINGER

38mm pin



TOWING HITCH AUTOMATIC



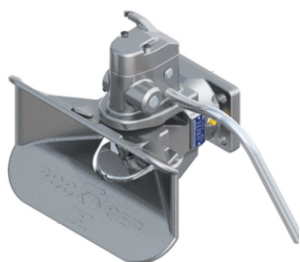
| RO Part number | Description | Hole pattern* (mm) | D-value (kN) | Vertical load (t) | Homologation | PRICE |
|----------------|------------------------------|--------------------|--------------|-------------------|--------------|-------|
| RO841B30000 ** | Towing hitch 841B30 pin 38mm | 120 x 55 | 60.0 | 0.5 * | ECE | £770 |
| RO841B40000 ** | Towing hitch 841B40 pin 38mm | 140 x 80 | 100.0 | 1.0 * | ECE | £770 |
| RO841B50000 ** | Towing hitch 841B50 pin 38mm | 160 x 100 | 100.0 | 1.0 * | ECE | £770 |

For harvesting machines
For agricultural trailers
Prepared for mechanical remote control

38mm pin



TOWING HITCH AUTOMATIC



| RO Part number | Description | Hole pattern* (mm) | D-value (kN) | Vertical load (t) | Homologation | PRICE |
|----------------|------------------------------|--------------------|--------------|-------------------|--------------|-------|
| RO846B3030C ** | Towing hitch 846B30 pin 38mm | 120 x55 | 60 | 0.5 | ECE | £865 |
| RO846B4030C ** | Towing hitch 846B40 pin 38mm | 140 x 80 | 100 | 1.0 | ECE | £865 |
| RO846B5030C ** | Towing hitch 846B50 pin 38mm | 160 x 100 | 100 | 1.0 | ECE | £865 |

For harvesting machines
For agricultural trailers
Release lever mechanism
Prepared for mechanical remote control

* indication of Dc and V-value when used outside of the LoF range

**also available with hand lever downwards

All hitches are standard black e-coated

* Hole pattern and track width see page 8

Acceptable Wear



Remote control for trailer hitches

ROCKINGER



REMOTE CONTROL MECHANISM

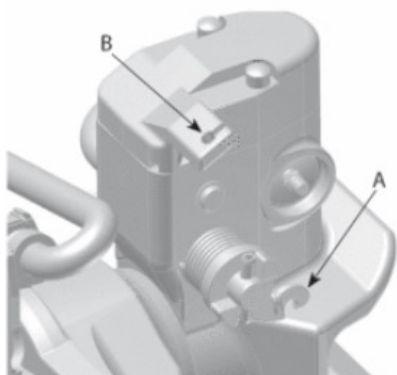
The mechanical remote control can be used for all automatic hitches which are prepared accordingly:

Connection for the Bowden cable on the hand lever axle (A)

Bowden cable duct on the support cover of the hitch (B)

Will mount to Automatic Towing Hitches - **Series RO*855, RO*865, RO*873, RO*846**

See assembly instructions for installation of the remote control.



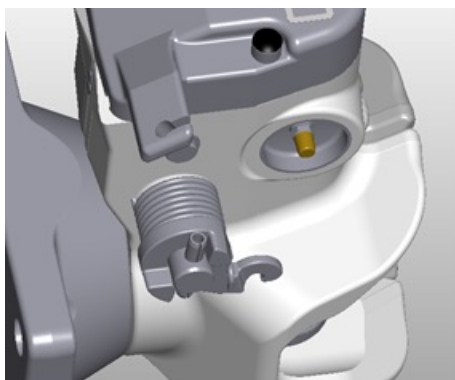
REMOTE CONTROL LEVER ASSEMBLY



Installation in the drivers cab
The Bowden cable lever can be installed in any position, depending on the type of the tractor.

| Part number | Description | PRICE |
|-------------|--------------|-------------|
| ROE71164 | Bowden Cable | £235 |

Fit the Bowden cable lever in such a way that unintentional opening of the hitch is ruled out.



REMOTE CONTROL LEVER ASSEMBLY



In calculating of the length of the Bowden cable make sure to take account of the rotation and height adjustment of the hitch!

The length refers to the length of the Bowden cable sleeve

| Part No. | Length (mm) | PRICE |
|----------|-------------|-------------|
| ROE57337 | 850 | £130 |
| ROE57338 | 950 | £130 |
| ROE57339 | 1000 | £130 |
| ROE57340 | 1250 | £130 |
| ROE57341 | 1500 | £130 |
| ROE57342 | 1600 | £130 |
| ROE57343 | 2000 | £140 |
| ROE57344 | 2500 | £140 |
| ROE57345 | 3000 | £140 |
| ROE57346 | 4000 | £190 |
| ROE57347 | 5000 | £225 |

Safety sensor retro fit set for RO855/865

ROCKINGER



WIRELESS SENSOR SYSTEM



| RO Part number | Description | PRICE |
|----------------|---|-------|
| ROE75L160* | safety sensor / display / ram protection / safety pin | £535 |

* individual parts on request

The correct locking of the towing hitch is shown on a display in the driver's cab. Incorrect assessment and the resulting damage to the coupling or vehicle are safely excluded.

The sensor also offers impressive features:

Locking position shown on display in the driver's cab

There is no need to get out and check the locking indicator on the coupling

- Wireless transmission
- Sensor, radio transmitter and battery as a dirt and watertight unit
- Removing or inserting the drawbar from the bracket as before, without any additional actions
- Fast and easy mounting
- Power supply from battery for up to three years
- Can be used on any tractor



The optional safety sensor.



... and on the coupling.



The locking status is displayed in the driver's cab...



Simply safe!

80mm ball hitch fixed

ROCKINGER



BOLT ON TOWING HITCH – 80mm BALL



| RO Part number | Description | Hole pattern* (mm) | D-value (kN) | Vertical load (t) | Homologation | PRICE |
|----------------|---------------------|--------------------|--------------|-------------------|--------------|-------|
| RO825B50002 | Towing hitch 825B50 | 160 x 100 | 100.0 | 4.0 | ECE | £565 |

Manual 80mm ball coupling for flange mounting.

* Hole pattern and track width see page 8

All hitches are standard black e-coated

Available OEM colours: ■ John Deere green ■ AGCO grey ■ black

Ball hitch tool



BALL HITCH GAUGE



| Part number | Description | PRICE |
|-------------|---------------|-------|
| ROE57L062 | ø 80 mm, KS80 | £20 |

Acceptable Wear



Calotte and Towing Eyes



FLANGE CALOTTE FOR BALL HITCH 80mm



| RO Part number | Description | Hole pattern* (mm) | D-value (kN) | Vertical load (t) | Homologation | PRICE |
|----------------|--------------------------------------|--------------------|--------------|-------------------|--------------|-------|
| ROE59344 | Towing eye / ball 80 / 6-hole flange | 100 x 110 | 89.3 | 2.5 | ABG | £235 |
| ROE59347 | Towing eye / ball 80 / 8-hole flange | 100 x 110 | 89.3 | 3.0 | ECE | £235 |
| ROE59339 | Towing eye / ball 80 / 8-hole flange | 130 x 130 | 97.1 | 4.0 | ECE | £345 |
| ROE59343 | Towing eye / ball 80 / 8-hole flange | 145 x 145 | 97.1 | 4.5 | ECE | £300 |
| ROE57L013* | Towing eye / ball 80 / 8-hole flange | 145 x 145 | 97.1 | 4.5 | ECE | £270 |

long centre hole



ROE 59343

SCREW SETS FOR 8 HOLE AND 8 HOLE FLANGES

| RO Part number | Description | No of Bolts | Size | PRICE |
|----------------|-------------|-------------|---------------|-------|
| ROE70950 | Screw Set | 8 Holes | M16 x 55 10.9 | £25 |
| ROE70951 | Screw Set | 6 Holes | M16 x 55 10.9 | £20 |

* Hole pattern and track width see page 8

All hitches are standard black e-coated

Acceptable Wear



Low maintenance calotte KS80

ROCKINGER



WITH WEAR INSERT



| RO Part number | Description | Hole pattern* (mm) | D-value (kN) | Vertical load (t) | Homologation | PRICE |
|----------------|---|--------------------|--------------|-------------------|--------------|-------|
| ROE57L036 | Towing eye / ball 80 / with wear insert | 100 x 110 | 89.3 | 2.5 | ECE | £235 |
| ROE57L039 | Towing eye / ball 80 / with wear insert | 145 x 145 | 97.1 | 4.5 | ECE | £300 |

For ball hitches ø 80 mm in accordance with ISO 24347

SCREW SETS FOR 8 HOLE AND 8 HOLE FLANGES

| RO Part number | Description | No of Bolts | Size | PRICE |
|----------------|-------------|-------------|---------------|-------|
| ROE70950 | Screw Set | 8 Holes | M16 x 55 10.9 | £25 |

Spare part

For a connection with coupling balls ø 80 mm in accordance with ISO 24347

P/N: ROE75L166
Includes 5 x Inserts



Benefit



Wear insert

- No lubrication necessary
- Low wear on the ball 80
- The wear insert can simply be replaced
- No replacement for the entire calotte required
- Homologated and patented

Find Applications

Baler



Not for tillage



Loader wagon



Read the report on the non-lubricated calotte

Dung spreader



Transport (tipper)



Field sprayer



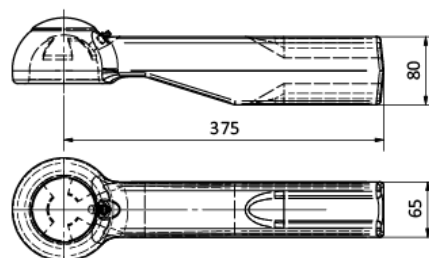
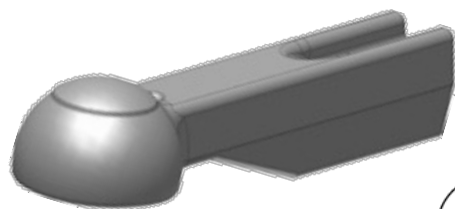
* Hole pattern and track width see page 8
All hitches are standard black e-coated

80mm Calotte Weld on Type

ROCKINGER



WELD ON 80mm CALOTTE

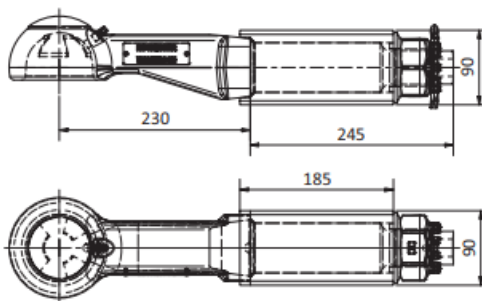


| RO Part number | Description | D-value (kN) | PRICE |
|----------------|---|--------------|-------|
| ROE57391 | Ball hitches Ø 80 mm in accordance with ISO 24347 | 120 | £200 |

The drawbar eye is approved after welding in connection with the drawbar



WELD ON RIGID SCREW IN FLANGE CALOTTE FOR BALL HITCH 80mm



| RO Part number | Description | D-value (kN) | S | Homologation | PRICE |
|----------------|---|--------------|------|--------------|-------|
| ROE57L007 | (central axle trailer ABG to 40 km/h) | 102.4 | 4000 | ABG | £395 |
| ROE57L007 | (central axle trailer ABG over 40 km/h) | 102.4 | 3500 | ABG | |
| ROE57L007 | (central axle trailer EG) | 102.4 | 2000 | EG | |

For ball hitches Ø 80 mm in accordance with ISO 24347

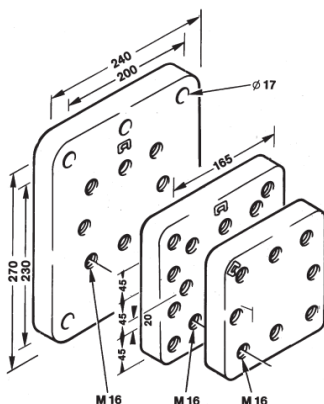
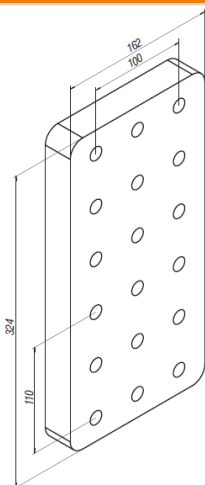
The bearing is welded into a rigid drawbar.
When worn, only the eyelet needs to be replaced and not the entire bearing

Welding Plates

ROCKINGER



PRE-DRILLED TOWING HITCH MOUNTING PLATES



| RO Part number | Description | Outside Dimension | Hole Pattern | PRICE |
|----------------|---------------------|-------------------|---------------------|-------|
| ROE70304 | welding plate | 162 x 162 x 30 | 100 x 110 x 110 | £90 |
| ROE70305 | mounting plate | 200 x 185 x 30 | 100 x 110 x 110 | £130 |
| ROE70306 | mounting plate | 270 x 240 x 30 | 100 x 110 x 110 | £165 |
| ROE70307 | welding plate | 200 x 190 x 40 | 130 x 130 x 130 | £205 |
| ROE74L074 | welding plate | 200 x 200 x 40 | 145 x 145 x 145 | £150 |
| ROE74L108 * | welding plate | 324 x 162 x 30 | 4 x 100 x 100 x 110 | £155 |
| ROE70950 | Screw Set – 8 Holes | M16 x 55 10.9 | | £25 |

Screws are included in each mounting kit.

*Screws are not included in the mounting kit, see ROE70950.

Welding / bolting plates are taken into account in type approval of the drawbar



70304



70305



70306



70307



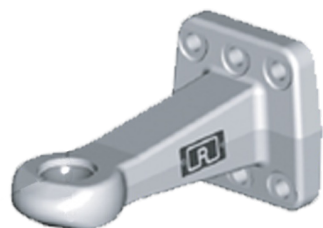
74074

Bolt On Towing Eyes

ROCKINGER



TOWING EYE 40mm EYE, 42mm EYE DEPTH



| RO Part number | Description | Hole pattern* (mm) | D-value (kN) | Vertical load (t) | Homologation | PRICE |
|----------------|-------------------------|--------------------|--------------|-------------------|--------------|-------|
| ROE57233 | Towing eye, 40mm 6 hole | 100 x 110 | 130 | 2.5 | ABG | £200 |

DIN 11026



TOWING EYE 40mm



| RO Part number | Description | Hole pattern* (mm) | D-value (kN) | Vertical load (t) | Homologation | PRICE |
|----------------|--------------------------|--------------------|--------------|-------------------|--------------|-------|
| ROE57243 | Towing eye 40mm / 8-hole | 100 x 110 | 130.0 | 1.0 | EG | £260 |

DIN 74054

High Tensile
Bushing



TOWING EYE 50mm



| RO Part number | Description | Hole pattern* (mm) | D-value (kN) | Vertical load (t) | Homologation | PRICE |
|----------------|------------------|--------------------|--------------|-------------------|--------------|-------|
| ROE57L099 | Towing eye, 50mm | 100 x 110 | 89.3 | 3.0 | ECE E1 | £295 |

Acceptable Wear



SCREW SETS FOR 8 HOLE AND 8 HOLE FLANGES

| RO Part number | Description | No of Bolts | Size | PRICE |
|----------------|-------------|-------------|---------------|-------|
| ROE70950 | Screw Set | 8 Holes | M16 x 55 10.9 | £25 |
| ROE70951 | Screw Set | 6 Holes | M16 x 55 10.9 | £20 |

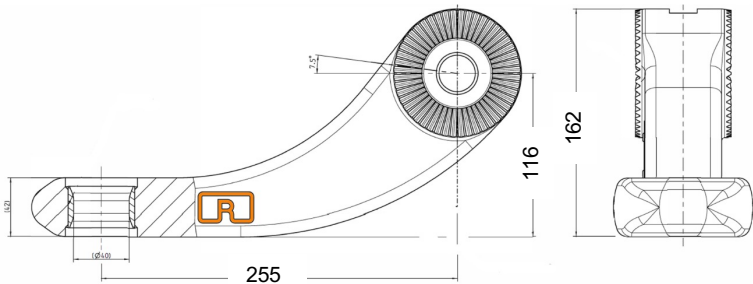
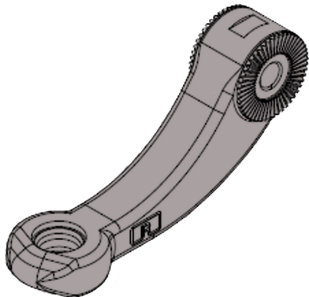
Bolt On Towing Eyes



TOWING EYE 40mm EYE – TEETH CONNECTION

| RO Part number | Description | Connection | D-value (kN) | Vertical load (t) | Homologation | PRICE |
|----------------|------------------------|-----------------------|--------------|-------------------|--------------|-------|
| ROE57L091 | Teeth Towing eye, 40mm | Single bolt, 48 Teeth | 52.5 | 1.5 | ECE E1 | £180 |

DIN 2768



Acceptable Wear



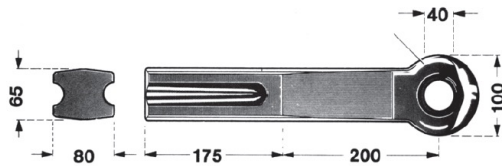
Weld On Towing Eyes



ROCKINGER

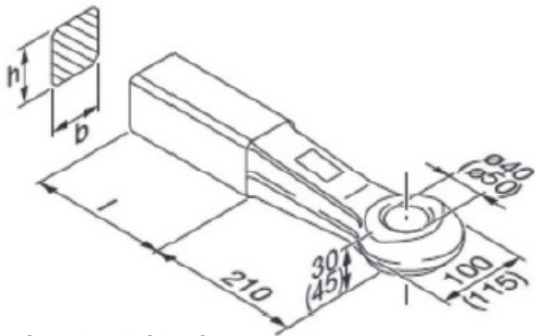


WELD ON TOWING EYE 40mm EYE



| Part number | Description | Frame entry depth | D-value (kN) | Vertical load (t) | PRICE |
|-------------|--------------------------|-------------------|--------------|-------------------|-------|
| ROE57231 | Weld in towing eye, 40mm | 175 | 120 | 2.5 | £150 |

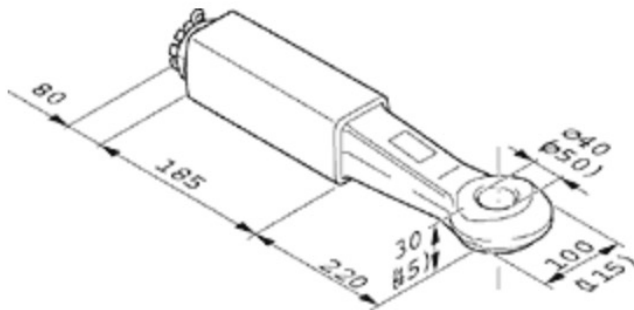
WELD ON TOWING EYE 40mm EYE



40 mm DIN 74054-40

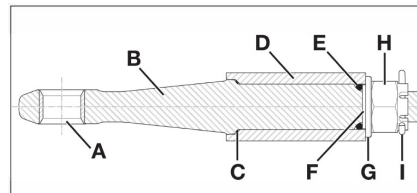
| Part number | Description | Dimensions | D-value (kN) | Vertical load (t) | Homologation | PRICE |
|-------------|--------------------------|------------|--------------|-------------------|--------------|-------|
| ROE57260 | Weld in towing eye, 40mm | 40 x 40 | 18 | 180 | EG | £65 |
| ROE57262 | Weld in towing eye, 40mm | 50 x 40 | 25 | 250 | EG | £70 |
| ROE57264 | Weld in towing eye, 40mm | 50 x 50 | 70 | 500 | EG | £75 |
| ROE57268 | Weld in towing eye, 40mm | 65 x 55 | 125 | 900 | EG | £80 |
| ROE57270 | Weld in towing eye, 40mm | 65 x 60 | 125 | 100 | EG | £85 |
| ROE57272 | Weld in towing eye, 50mm | 65 x 60 | 190 | 100 | EG | £115 |

WELD ON RIGID SCREW IN TOWING EYE 40mm EYE



The bearing is welded into a rigid drawbar.
When worn, only the eyelet needs to be replaced and not the entire bearing

| Part number | Description | Frame entry depth | D-value (kN) | Vertical load (t) | PRICE |
|-------------|--------------------------|-------------------|--------------|-------------------|-------|
| ROE57318 | Weld in towing eye, 40mm | 185 | 125 | 1.0 | £420 |
| ROE57321 | Weld in towing eye, 50mm | 185 | 190 | 1.0 | £485 |



- A Bush
- B Screw-in drawbar eye
- C O-ring small
- D Weld-in bearing
- E O-ring large
- F Washer small
- G Washer large
- H Crown nut
- I Split pin

Acceptable Wear



Quicke



Compact Loaders



ROCKINGER

Member of JOST Agriculture

JULY 22